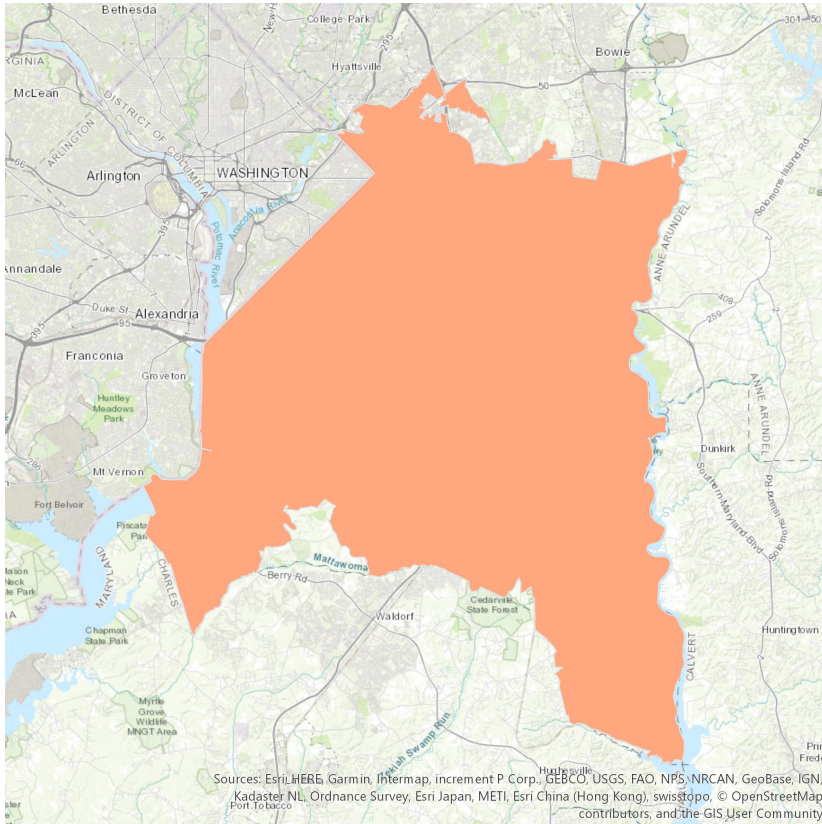


# Washington, DC Market

## Prince George's North



### Demographic Profile

Age Groups	
Persons 17 and under	22.70%
Adults 18-34	23.20%
Adults 35-54	28.90%
Adults 55+	25.30%
Education	
Attended College+	59.60%
Marital Status	
Single (Never Married)	41.80%
Married	35.00%
Divorced/Separated/Widowed	23.30%
Household Income	
\$49,999	14.40%
\$50,000-\$74,999	19.10%
\$75,000-\$99,999	15.10%
\$100,000+	36.50%
Housing Units & Family Type	
Occupied	60.70%
% of HH with Children	33.60%
Race	
White	12.70%
Asian	2.40%
Black/African American	78.20%
Other	6.80%

### Communities Served

- Accokeek
- Brandywine
- Clinton
- Hyattsville
- Temple Hills
- Andrews Air Force Base
- Capitol Heights
- District Heights
- Oxon Hill
- Upper Marlboro
- Aquasco
- Cheltenham
- Fort Washington
- Suitland

Source: Hybrid Exclusive Comcast Spotlight ad zone generated by Esri. 2016 American Community Survey, United States Census Bureau; aggregated to non-exclusive Comcast Spotlight ad zones. Generated by Rhiza for Media. Note: Marital Status Base = Adults 15+, Education Base = Adults 25+. Percentages may not add to 100% due to rounding. Cabletrack, Q2 2018.